

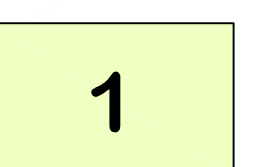
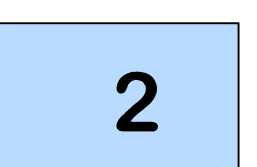




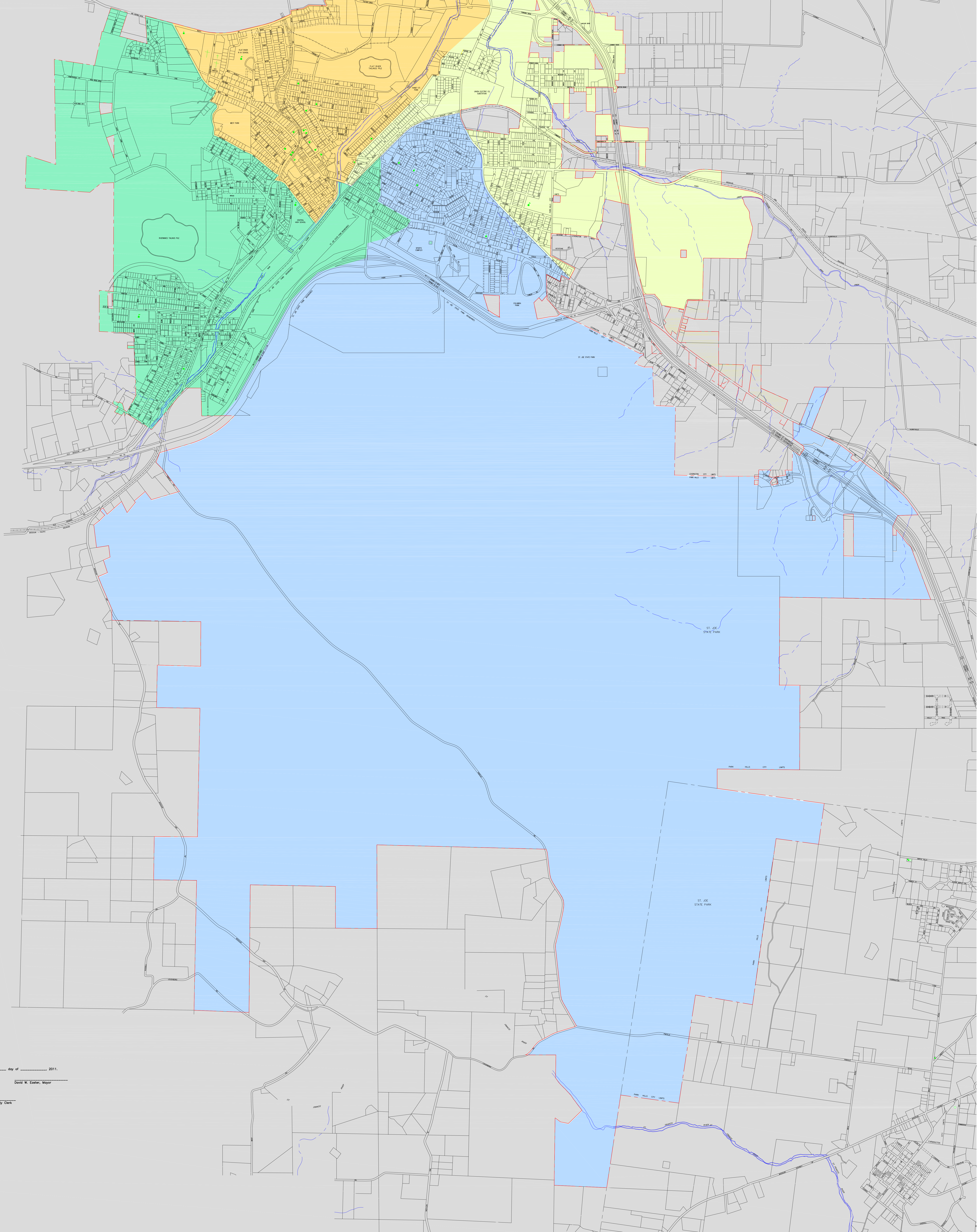
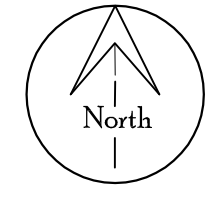
City of Park Hills, Missouri WARD LIMITS MAP

MAP KEY

- Corporate Limits Line 
- Un-Incorporated St. Francois County or Other Incorporated City 
- Ward Color Designation

			
---	---	---	---

SCALE: 1" = 1000'
EFFECTIVE DATE: September 27, 2011
DRAWN BY: Community Development Dept. - M. Whitwell



APPROVED this ____ day of _____, 2011.

David W. Easter, Mayor

ATTEST:

Carla Johnson, City Clerk